



**Palmera House**, 100 Field End Road, Ruislip, HA4

ONTD





## Palmera House, 270 Field End Road, Ruislip, HA4 9NB

*This stunning two bedroom first floor luxury apartment in an ultra-convenient location in the heart of Eastcote and its array of shops, bars and restaurants as well as transport links.*

- Luxury two bedroom apartment
- Open plan kitchen/reception room
- Fresh modern bathroom
- Allocated parking
- Unfurnished

Guide Price: £1,395 per month



0208 866 2727

192-194 Field End Road, Eastcote, Pinner,  
Middlesex, HA5 1RF

[www.lawrence-rand.co.uk](http://www.lawrence-rand.co.uk)


This stunning two bedroom first floor luxury apartment in an ultra-convenient location in the heart of Eastcote and its array of shops, bars and restaurants as well as transport links.

Modern contemporary open plan kitchen/living room with attractive wood flooring and double aspect windows flooding plenty of natural light into the room. The bespoke kitchen has a range of high gloss wall and base units, and granite work tops as well as integral appliances. The master bedroom is a good size double and the second bedroom being a single. A fresh modern bathroom completes this lovely apartment.

Benefits from allocated parking space and key fob entry.

Available unfurnished. From middle to end of February.

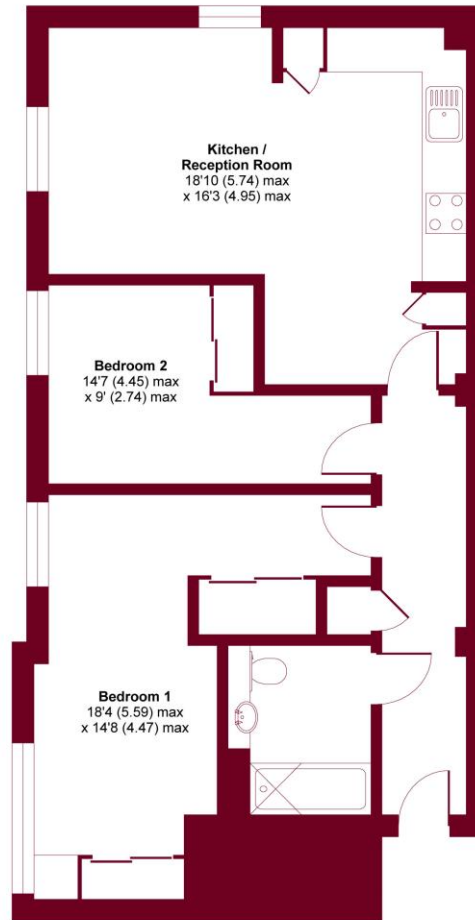
2 Bedrooms, 1 Reception Room, 1 Bathroom, Flat, First Floor, Off Street Parking, Unfurnished

Energy Efficiency Rating		
	Current	Potential
<i>Very energy efficient - lower running costs</i>		
(92+) <b>A</b>		
(81-91) <b>B</b>		
(69-80) <b>C</b>	78	78
(55-68) <b>D</b>		
(39-54) <b>E</b>		
(21-38) <b>F</b>		
(1-20) <b>G</b>		
<i>Not energy efficient - higher running costs</i>		
<b>England, Scotland &amp; Wales</b>	EU Directive 2002/91/EC	



# Palmera House, Field End Road, Ruislip, HA4

APPROX. GROSS INTERNAL FLOOR AREA 707 SQ FT 65.7 SQ METRES



FIRST FLOOR

Whilst every attempt has been made to ensure the accuracy of the floor plan contained here, measurements of doors, windows and rooms are approximate and no responsibility is taken for any error, omission or misstatement. These plans are for representation purposes only as defined by RICS Code of Measuring Practice and should be used as such by any prospective purchaser. Specifically no guarantee is given on the total square footage of the property if quoted on this plan. Any figure given is for initial guidance only and should not be relied on as a basis of valuation.

Copyright nichecom.co.uk 2019 Produced for Lawrence Rand Estate Agents REF : 423425

Every care has been taken with the preparation of these Particulars but complete accuracy cannot be guaranteed. Always check the details before agreeing to purchase. This includes checking on the existence of relevant permissions. If there is any point, which is of particular importance to you, please obtain professional confirmation. Alternatively, we will be pleased to check the information for you.

All measurements quoted are approximate. The Fixtures, Fittings & Appliances have not been tested and therefore no guarantee can be given that they are in working order. Photographs are reproduced for general information and it cannot be inferred that any item shown is included in the sale.

Drawings/Sketches/Plans - This representation is provided for general guidance and is not to scale

