

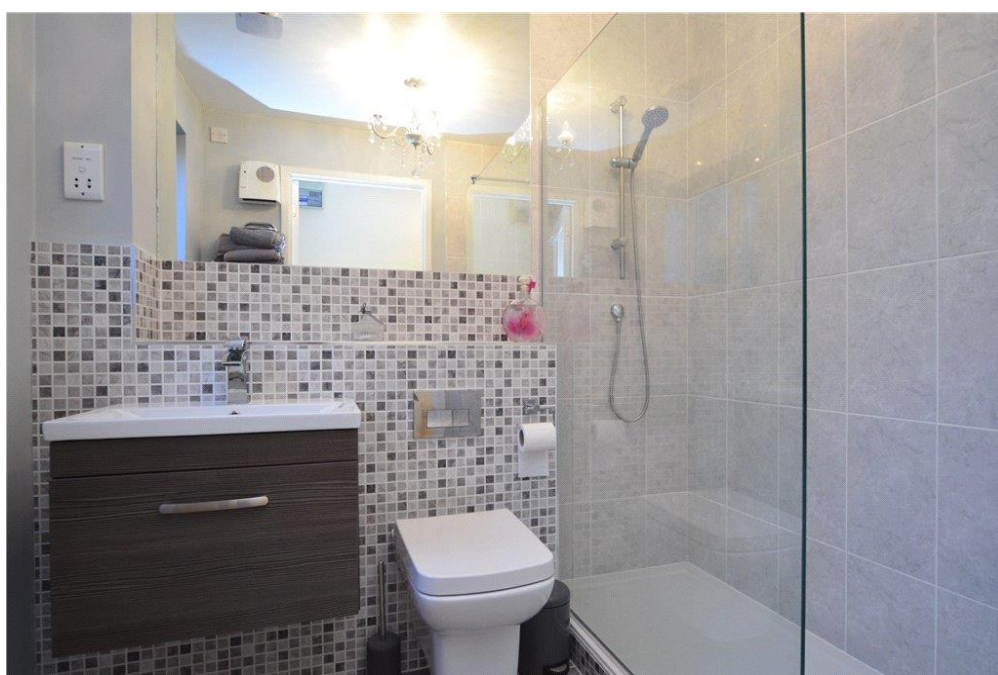
Every care has been taken with the preparation of these Particulars but complete accuracy cannot be guaranteed. Always check the details before agreeing to purchase. This includes checking on the existence of relevant permissions. If there is any point, which is of particular importance to you, please obtain professional confirmation. Alternatively, we will be pleased to check the information for you. All measurements quoted are approximate. The Fixtures, Fittings & Appliances have not been tested and therefore no guarantee can be given that they are in working order. Photographs are reproduced for general information and it cannot be inferred that any item shown is included in the sale. Drawings/Sketches/Plans - This representation is provided for general guidance and is not to scale.



## Bridgwater Road Ruislip







Bridgwater Road  
Ruislip  
£1,100 per month

## Key features

- One bedroom
- Ground floor flat
- Excellent location for transport links
- One allocated parking space

## Property details

Immaculately presented throughout this one bedroom flat is conveniently located for Ruislip Gardens shopping and transport links.

The property briefly comprises a welcoming entrance hallway, a spacious and light filled living room, modern fitted kitchen with a range of wall and base units, a good sized double bedroom with the added benefit of built in wardrobes and completing the property you have a bathroom with a walk in shower, hand wash basin and WC.

The property has one allocated parking space and also a communal garden.

Bridgwater Road is conveniently positioned for the amenities of Ruislip Gardens with its local shops and tube links to Central London (Central/Main Line).



We are local people who support our local community. We have unrivalled expertise and knowledge of the surrounding area

01895 632211  
lawrence-rand.co.uk

